

# AyrKing Corporation



# Remote Timer Box

AyrKing offers a remote timer box, model LS-TB, to be used with the AyrKing syrup stirrer. The timer box is remotely mounted to a wall and plugged into a standard 120 Volt AC receptacle. The syrup stirrer is then plugged into the electrical outlet on the front of the timer box. The desired run time can be set on the timer mounted in the face of the timer box. The left two numbers set minutes and the right two numbers indicate seconds. Normally the timer is set to run for 60 minutes. The mixer can then be turned on with the switch on the timer box. The green led light and illuminated timer display indicate when the stirrer is operating. The unit shuts off automatically.

Photo of LS-TB



**Intertek**

Conforms to UL Std. 863  
Certified to CAN/CSA Standard C22.2 No. 177-92

## **ADVANTAGES**

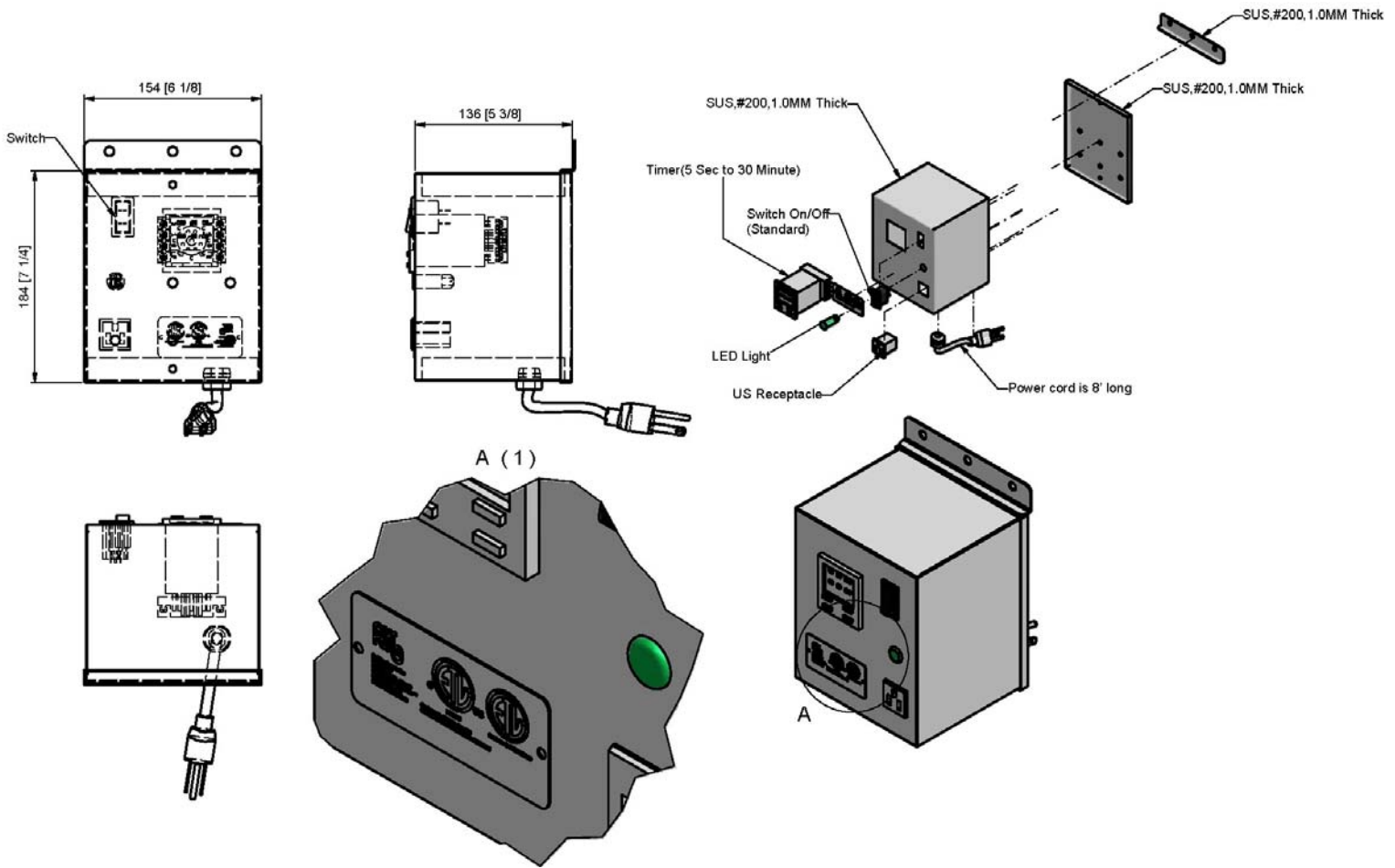
Press the start button on the timer box and walk away! No need to keep track of time. The mixer will turn off when the process is complete.

AyrKing Corporation  
2013 Cobalt Drive  
Louisville, KY 40299-2417

Telephone 502-266-6270  
Facsimile 502-266-6274  
[www.ayrking.com](http://www.ayrking.com)

# AyrKing Corporation

# Remote Timer Box



### MEASUREMENTS

MODEL	LENGTH	WIDTH	HEIGHT	WEIGHT
LS-TB	6 1/16" (154mm)	5 3/8" (136mm)	7 1/4" (184mm)	5 lb (2 1/4 kg)

### ELECTRICAL

Input: 120 VAC, 15 Amp, 60 Hz  
 Output: 120 VAC, 10 Amp, 60 Hz

AC receptacle fits NEMA 5-15P male three prong plug  
 Power cord is NEMA 5-15P male three prong plug

### WARRANTY

One Year Parts  
 Ninety Days Labor  
 No Travel Time

Specifications subject to change without notice. Version 01/13

AyrKing Corporation  
 2013 Cobalt Drive  
 Louisville, KY 40299-2417

Telephone 502-266-6270  
 Facsimile 502-266-6274  
 www.ayrking.com